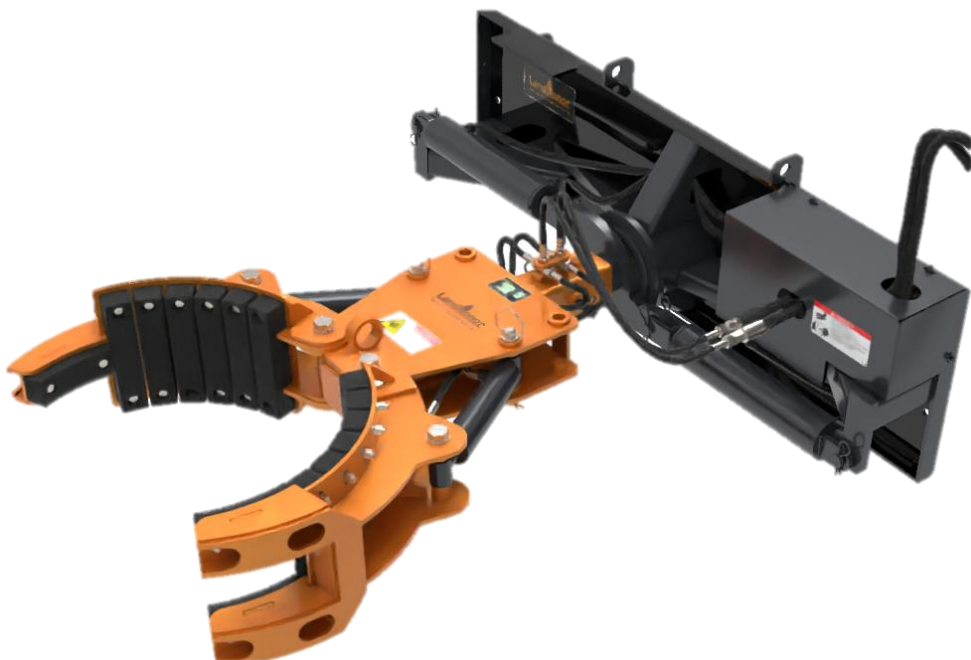


# **SKID STEER 3 FINGER ROCK & TREE MANUAL**

**Model:RG-11-5000G**



# Content

<b>I . GENERAL SAFETY PRECAUTIONS .....</b>	<b>3</b>
Operator Safety .....	3
Skid Steer Requirements .....	4
<b>II .ARTICULATING BRUSH CUTTER DIMENSIONS .....</b>	<b>6</b>
<b>III.BASIC PARAMETER OF ARTICULATING BRUSH CUTTER .....</b>	<b>8</b>
<b>IV. INSTALLATION &amp; SET-UP .....</b>	<b>9</b>
Using Your Implement Connecting Cutter to Skid Steer .....	9
Connecting the Coupler to the Attachment .....	9
<b>V . OPERATING INSTRUCTIONS .....</b>	<b>错误！未定义书签。</b>
<b>VI.HYDRAULIC ELECTRIC CONTROL SYSTEM .....</b>	<b>13</b>
<b>VII.MAINTENANCE .....</b>	<b>17</b>
Blade Removal & Replacement .....	错误！未定义书签。
Blades & Holder .....	错误！未定义书签。
Every Week .....	错误！未定义书签。
<b>VIII.TROUBLESHOOTING .....</b>	<b>错误！未定义书签。</b>
<b>IX.BOLT TORQUE SPECIFICATIONS .....</b>	<b>18</b>
GENERAL TORQUE SPECIFICATION TABLES .....	18
METRIC BOLT TORQUE SPECIFICATIONS .....	18

## **I . GENERAL SAFETY PRECAUTIONS**

### **Operator Safety**

Always read and understand the Operation and Maintenance Manual for this attachment. These attachments are designed to give maximum safety; but no machine design can prevent operator error or carelessness.

Always read, understand and follow the loader manufacturer's Operation and Maintenance Manual for all the loader functions and safety information.

Always read and follow the loader manufacturer's Operation and Maintenance Manual instructions for the correct procedure for raising and lowering the operations cab and/or the loader lift arms. Always install an approved lift arm support device when the lift arms are in the raised position for service or maintenance.

Do not exceed the loader manufacturer's rated operating capacity (ROC). Check the rules and regulations at your location. The rules may include an employer's work safety requirements. Regulations may apply to local driving requirements or use of a Slow Moving Vehicle (SMV) emblem. Regulations may identify a hazard such as a utility line.

Know the location of any underground or overhead lines. Call local utilities for locating underground lines or the TOLL FREE phone number listed below.

Check that the attachment mount levers are in the locked position and the wedges are fully engaged into the holes of the attachment.

When learning to operate the attachment, do it at a slow rate in an area clear of bystanders.

DO NOT permit personnel to be in the work area when operating the loader and attachment.

Before leaving the loader operator's seat, always lower the lift arms fully,

engage the brake and stop the engine.

DO NOT make any adjustments or repairs on the loader or the attachment while the loader engine is running.

### **Skid Steer Requirements**

You will install the electric joystick that accompanies this attachment or your skid steer must be equipped with an auxiliary electric option with an electric connector mounted on the machine's loader lift arm from the skid steer manufacturer. To complete the connection, the mating connector on the loader arm needs to match the connector from the attachment.

A 12 V power source coming directly from the battery or from any other circuit that is energized all the time could result in death or serious injury if the attachment control switch is accidentally bumped when the operator is entering or exiting the skid steer with the engine running.

Always refer to the polarity symbols printed on the top of the battery. Refer to the markings on the battery to determine the location of the negative (-) cable. When removing the battery cables from the battery, always remove the negative cable first and reinstall the negative cable last.

DO NOT smoke around a battery, or use anything that produces an open flame or spark to avoid an explosion that could result in death or serious injury.

The 12V power source for this attachment should be connected into the skid steer's Operator Presence System that cuts the electrical power to the attachment shift valves if the operator's safety restraint bar is raised or the seat switch is disengaged when the operator raises from the seat.

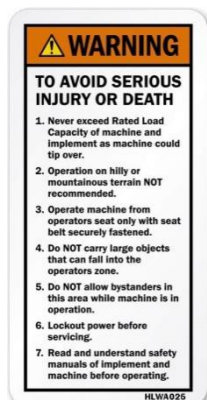
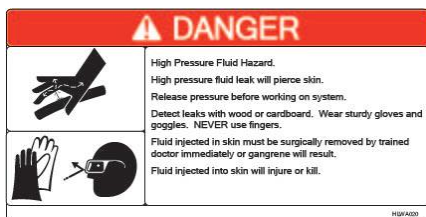
When using the provided joystick, route the wiring harness to the pivot point of the loader arm and tie it with plastic cable ties to the inside of the loader arm to prevent snagging the harness with branches. After installing the harness, check that the harness is free from any tension

when raising and lowering the loader arm through its complete cycle.

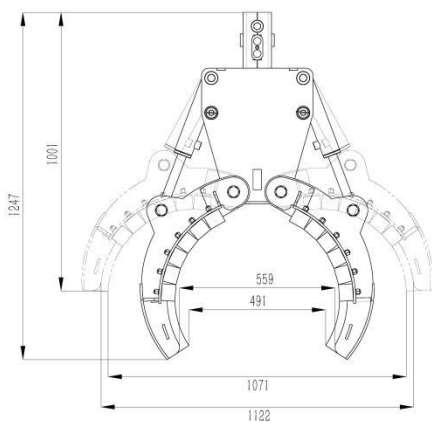
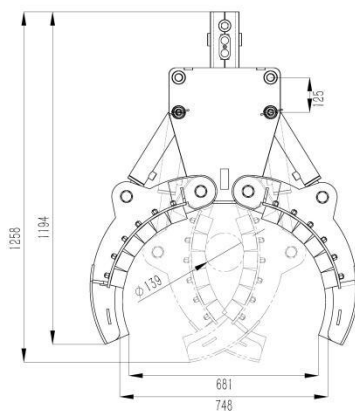
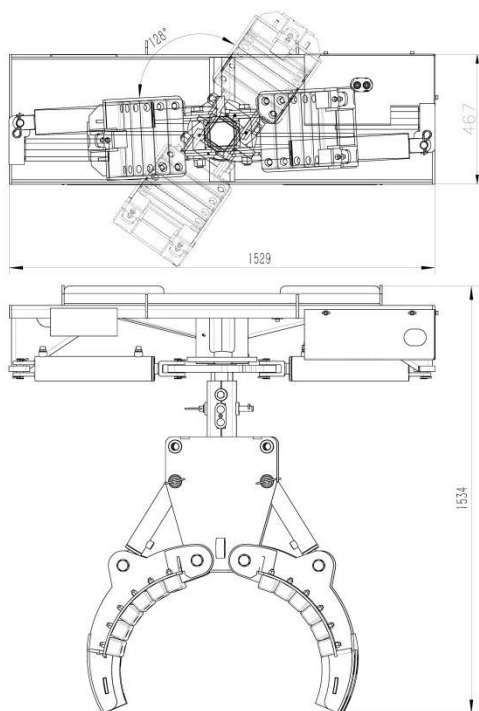
To protect the operator from any flying debris, it is important that the skid steer is equipped with a thermoplastic polycarbonate windshield or similar.



LandHonor POWERFUL ATTACHMENT TOOLS			
Model	RG-11-5000G	Weight	750 lbs
Serial NO.	HL-00001	Max pressure	3000 PSI
Rated Capacity	5000 lbs	Flow Range	20-30 GPM
Year	2023		
Email: <a href="mailto:service@landhonor.com">service@landhonor.com</a>			CE



## II .3 FINGER ROCK & TREE HAND DIMENSIONS



### III. BASIC PARAMETER OF 3 FINGER ROCK & TREE HAND

Rated Weight Capacity for Handling Rocks	5000 Ibs
Rated Weight Capacity for Handling Trees	2000 Ibs
Max Tree Length	35 ft
Mass of 3 Finger Rock and Tree Hand without Rotating Base	255 Ibs
Mass of Double Cylinder Rotating Base	425 Ibs
Rotation Angle	127°
Size of 3 Finger Rock and Tree Hand without Rotating Base	49.6*23*11.4"
Size of Double Cylinder Rotating Base	23.5*60.2*20.3"

Location of Pin for Cylinder	Max Opening	Min Opening
Front	26.5"	5"
Back	41.5"	19.25"



## **IV. INSTALLATION & SET-UP**

### **Using the Base to Skid Steer**

Verify that the hydraulic hoses and wiring harness are clear of the front of the attaching plate on the attachment and that the mounting plate is free of dirt and debris. If clear, move the skid steer to proximity of attachment plate. Tilt the skid steer coupler forward to align the coupling point with the upper part on the attachment plate and raise the coupler slightly.

### **Connecting the Coupler to the Base**

When the top edge of the coupler is seated in the top part of the coupler plate, roll the skid steer tilt function back until the attaching plate is flat against the skid steer coupler. Lock down the coupler levers.

Wipe off any dirt or dust from the male or female hydraulic flat-face couplers with a clean rag before attaching the hoses to keep contaminants from entering the hydraulic system.

Connect the hydraulic hoses to the auxiliary circuit connectors on the skid steer. Connect the electrical wiring harness to the appropriate connector on the skid steer.

Check the surrounding area for bystanders and clear it before starting the skid steer or attachment.

Before operating the attachment, always visually inspect and verify that the coupler locking pins are fully engaged through the latch slots in the attachment plate.

Never enter the area underneath the coupler or any part of the attachment when it is in the raised position to avoid an accident resulting in death or serious injury.

### Connecting the 3 Finger Rock & Tree Hand to the Base

After the base is attached to the skid steer, the 3 Finger Rock & Tree Hand will now slide onto the shaft on the base. To do this, line up the solid shaft on the base to the hollow receiver tube on the barrel handler as shown in Figure 1. Slowly drive the skid steer forward and slide the shaft into the receiver tube. If the shaft doesn't slide very easily, grease can be rubbed onto it to reduce friction. Slide the pin into the hole to lock the barrel handler onto the base as shown in Figure 2.

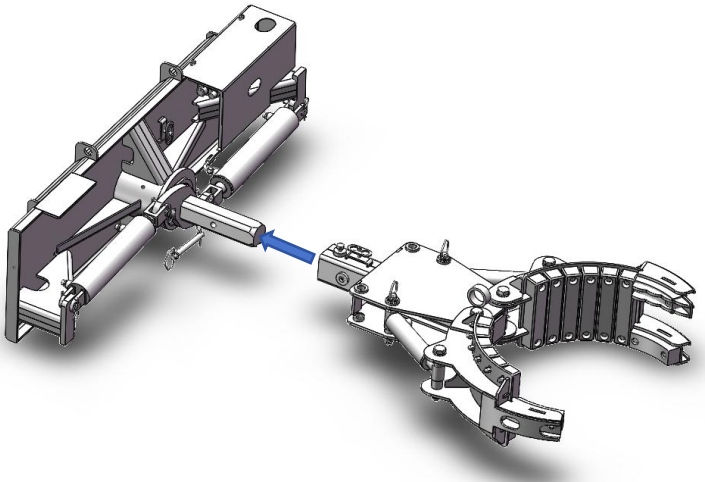


Figure 1: Assembling the 3 Finger Rock & Tree Hand on the base

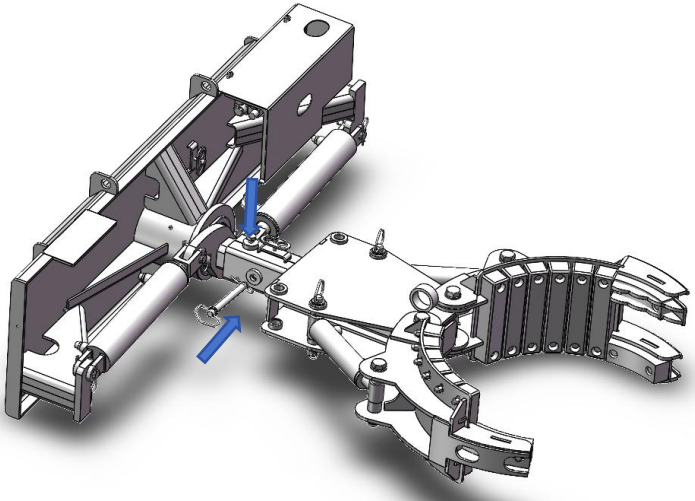
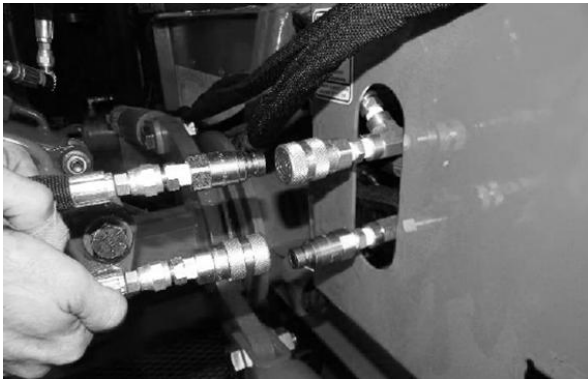


Figure 2: Locations for the pin and the bolt

## Connecting the Hydraulic Lines

Connect the 3/8" hydraulic couplers to the base Figure 3



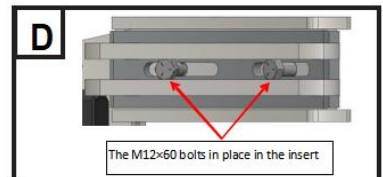
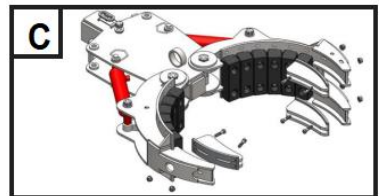
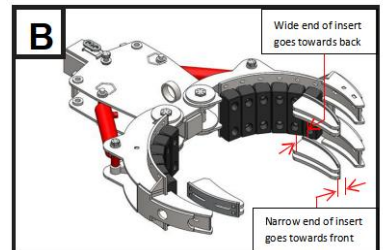
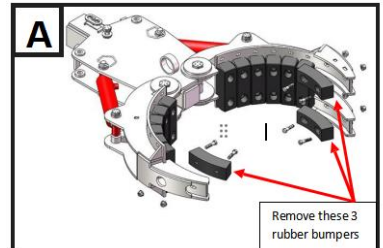
## Installing Inserts

Inserts are available for handling rocks and for extending the tips on the arms.

### Rock Inserts

Rock inserts are a durable alternative to the rubber bumpers in the tips of the arms of the rock and tree hand. To install the rock inserts, do the following:

1. Remove the rubber bumpers from the tips of the arms[A].
2. Line up the bolt slots on the rock insert with the slots on the tree hand arms. The narrow end of the insert goes towards the front of the attachment [B].
3. Install the M12×60 bolts [C]. The bolt head fits in between the two metal plates of the insert [D].
4. The attachment is now ready to use [E].



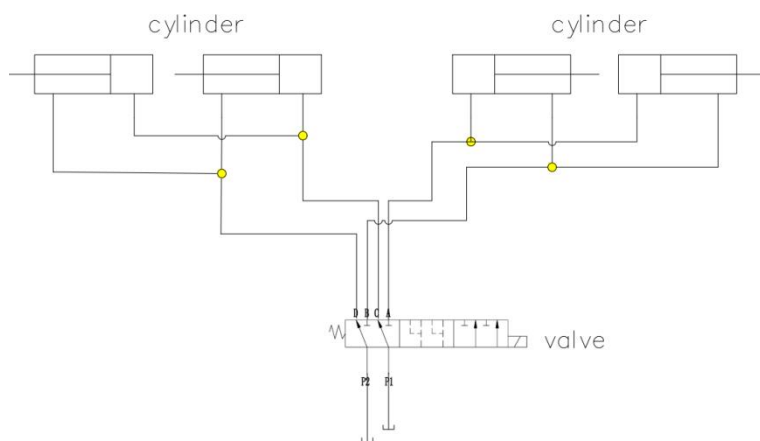
## V. HYDRAULIC ELECTRIC CONTROL SYSTEM

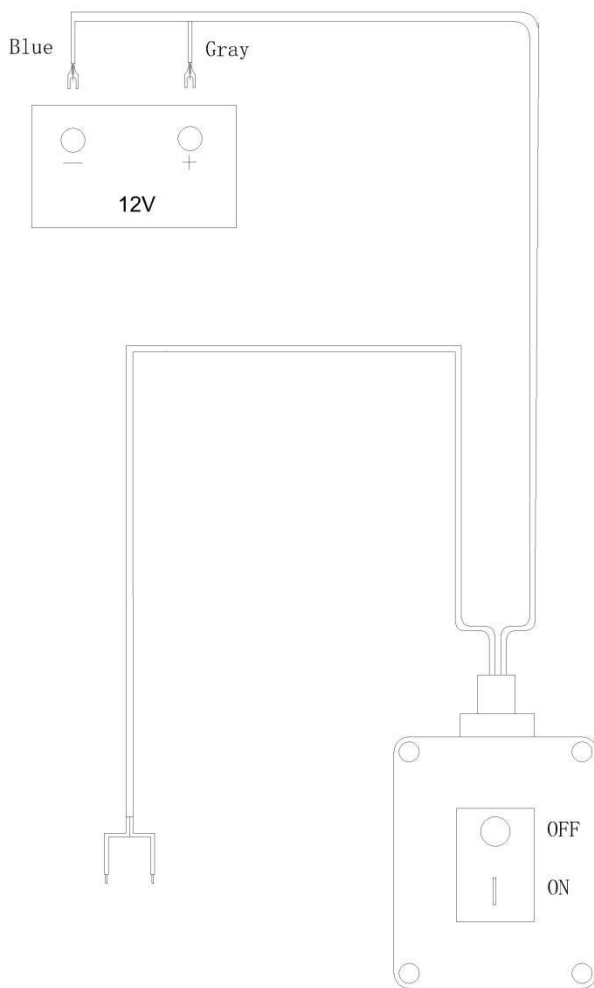
Read all safety decals and safety statements in all manuals before beginning any hydraulic connection. Know and obey all OSHA regulations, local laws, and other professional guidelines for your operation. Know and follow good work practices when assembling, maintaining, repairing, mounting, removing, or operating this equipment.

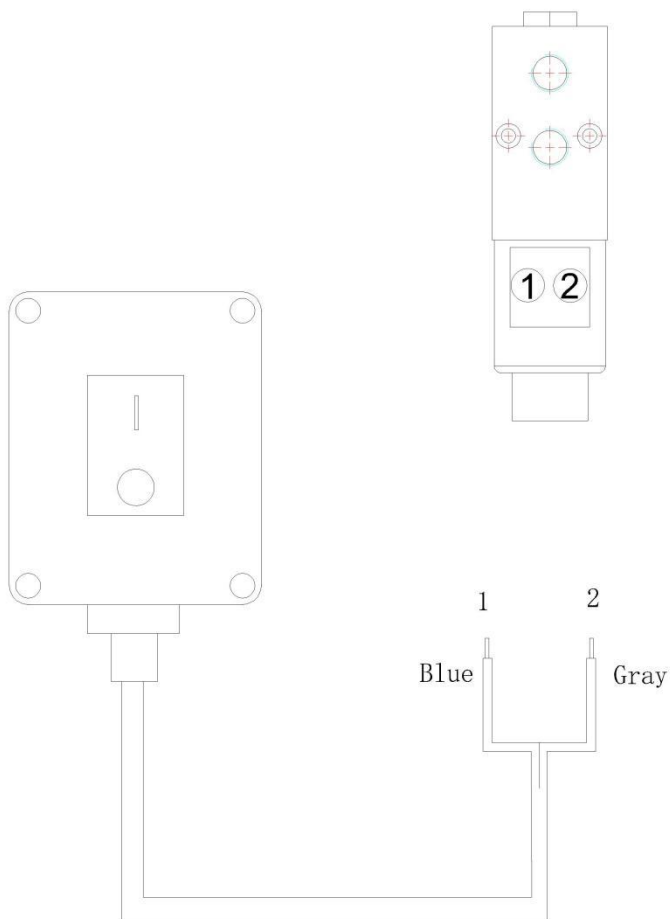
1. Disconnect the hydraulic hose quick coupler from one another and attach the quick coupler to the prime mover as per the instructions in your prime mover operator's manual.

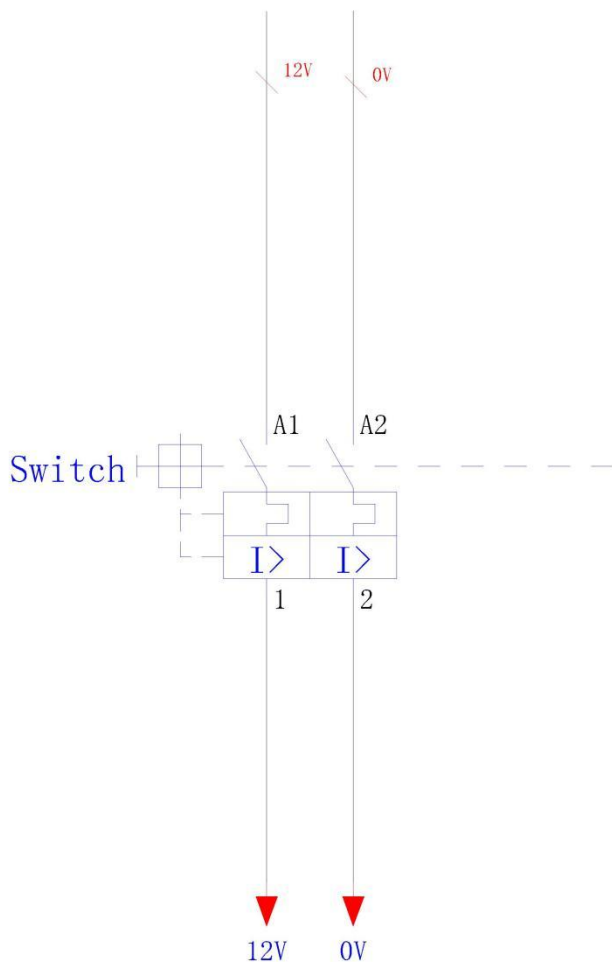
2. Carefully raise the loader and cycle the rollback/dump cylinders to check hose clearances and check for any interference. Operate the hydraulic cylinder(s) on this product and perform the same checks.

3. Cycle the hydraulic cylinder(s) on this product from fully retracted to fully extended several times until all air has been completely removed from the cylinder(s).









## Solenoid Valve

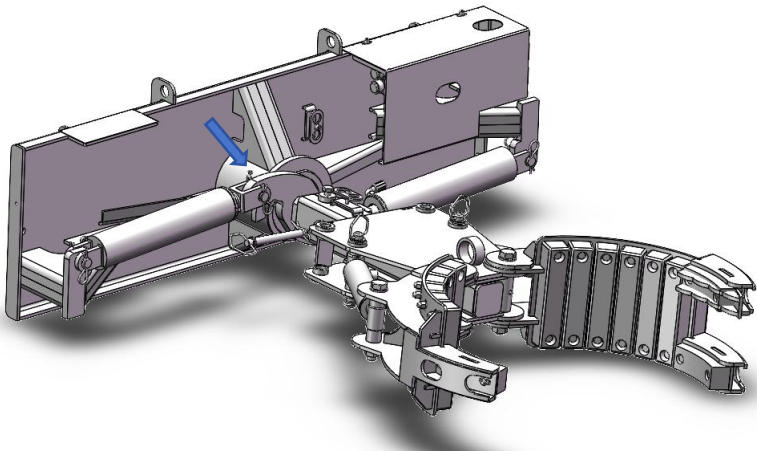


## VI.MAINTENANCE

To keep the 3 Finger Rock & Tree Hand at maximum efficiency, minimal maintenance is required. This includes greasing, inspecting, and cleaning the barrel handler.

### Grease Points

The rotation shaft is the main part that needs to be greased. The location of the grease zerk is shown in Figure. The shaft should be greased weekly to keep the bearings running smoothly. Use a high quality Lithium based grease



## VII. BOLT TORQUE SPECIFICATIONS

### GENERAL TORQUE SPECIFICATION TABLES

Use the following charts to determine bolt torque specifications when specific torques are not given. Always use grade 8.8 or better when replacing bolts.

### METRIC BOLT TORQUE SPECIFICATIONS

The following torque values are for use with metric bolt head identification marks as per grade. Hardware that is unplated and either dry or lubricated with engine oil. Reduce torque by 15% when using hardware with extreme pressure lubricants, plating or hard washer applications.

(A) Diameter & Thread Pitch (Millimeters)	Wrench Size	COARSE THREAD				FINE THREAD				(A) Diameter & Thread Pitch (Millimeters)
		MARKING ON HEAD				MARKING ON HEAD				
		Metric 8.8		Metric 10.9		Metric 8.8		Metric 10.9		
		N-m	lbs-ft	N-m	lbs-ft	N-m	lbs-ft	N-m	lbs-ft	
6 x 1.0	10 mm	8	6	11	8	8	6	11	8	6 x 1.0
8 x 1.25	13 mm	20	15	27	20	21	16	29	22	8 x 1.0
10 x 1.5	16 mm	39	29	54	40	41	30	57	42	10 x 1.25
12 x 1.75	18 mm	68	50	94	70	75	55	103	76	12 x 1.25
14 x 2.0	21 mm	109	80	151	111	118	87	163	120	14 x 1.5
16 x 2.0	24 mm	169	125	234	173	181	133	250	184	16 x 1.5
18 x 2.5	27 mm	234	172	323	239	263	194	363	268	18 x 1.5
20 x 2.5	30 mm	330	244	457	337	367	270	507	374	20 x 1.5
22 x 2.5	34 mm	451	332	623	460	495	365	684	505	22 x 1.5
24 x 3.0	36 mm	571	421	790	583	623	459	861	635	24 x 2.0
30 x 3.0	46 mm	1175	867	1626	1199	1258	928	1740	1283	30 x 2.0



**LANDHONOR INDUSTRY**

**Tel: 1-800-649-8017**

**Business: [sales@landhonor.com](mailto:sales@landhonor.com)**

**Service: [service@landhonor.com](mailto:service@landhonor.com)**

**Website: [www.landhonor.com](http://www.landhonor.com)**