

PRODUCT MANUAL

V2023.9.25

72 IN ANGLE BROOM SWEEPER MANUAL

Model: PAB-11-72W



**FOR MORE INFO
SCAN HERE**



SKID STEER ATTACHMENT

Content

I. Preface 1

II. Security statements2

III. Warning labels 3

 Warning Label Location:3

IV. Technical Parameter 5

V. Installation 6

 Manual-controlled Quick-change Device 6

 WARNING: 7

 Hydraulic connection:8

VI. Operation9

 Basic operation:9

 Notes9

VII. Maintenance12

I. Preface

This product is carefully designed and manufactured to provide you with many years of reliable service. Only small maintenance (such as cleaning and lubrication) is required to keep it in top working condition. Be sure to follow all maintenance procedures and safety precautions in this manual, as well as any safety labels on the product.

This manual is designed to help you take your job better and more safely. Please read this manual carefully and familiarize yourself with its contents. Do not allow anyone to operate this device without reading this manual.

The illustrations and data used in this manual are up to date at the time of printing (based on the information available to us), but we reserve the right to redesign and change attachments if necessary without notice. Ensure that only trained personnel who have read and understood this manual are allowed to operate the equipment. If you do not understand this manual or features of this equipment, please contact your local authorized distributor or the manufacturer for further assistance. This manual is provided to new owners and operators for reference.

II. Security statements

Improper installation, operation or maintenance of the equipment can cause serious personal injury or even death.

This manual and all manuals related to this equipment and prime mover shall be carefully read by operators and maintenance personnel before starting installation, operation or maintenance. Follow all safety instructions in this manual and prime mover manual.

Read and understand all safety statements. Read the warning labels and safety statements in all manuals before operating or using this device.

Understand and comply with all regulations, local laws and other professional guidelines. Understand and follow good working practices when assembling, maintaining, repairing, installing, removing or operating the equipment.

Familiarize yourself with the performance, size of your device before operation.

Visually inspect the equipment before starting up. It is strictly prohibited to operate the equipment that is not functioning normally when all safety devices are in good condition. Check all the hardware to be tightened. Ensure that all locks, pins, and connections are properly installed and secured. Remove and replace any damaged or excessively worn parts. Ensure that all security decals are in place and legible. Keep warning labels clean and replace them if they are worn or difficult to read.

III. Warning labels

Warning Label Location:

The location of the warning labels used is shown in Figure1-1. Warning labels are identified by their part number and instructions for using the warning labels are shown in 1-2. Use this information to order replacements for lost or damaged warning labels. Be sure to read all warning label before handling accessories. They contain the information you need to understand and the safety and life span of the product.

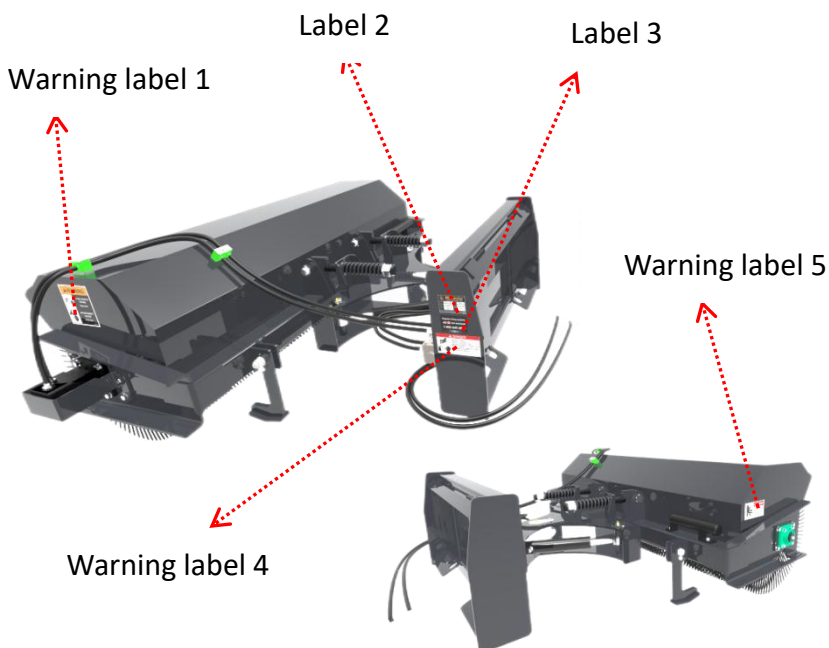


Figure 1-1



Warning Label 1
Flying Objects Hazard and
Entanglement Hazard



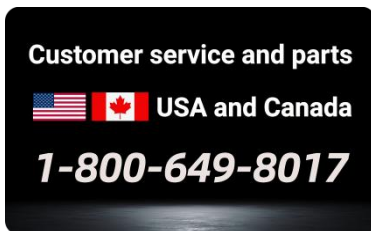
Warning Label 5
Crush Hazard



Warning Label 3
High Pressure Fluid Hazard

Model	BBS-11-72W	Max pressure	3000 psi
Serial NO.	ZW-00001	GPM Range	15-20 gpm
Weight	920 lbs	Width	86 in
Year	2023		
Email: usawolverine@hotmail.com 			

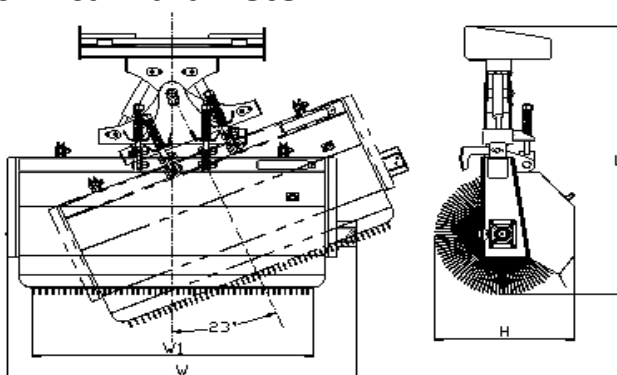
Tag 4
Name Plate



Tag 5
After-sales
Hotline:1-800-649-8017

Figure 1-2

IV. Technical Parameter



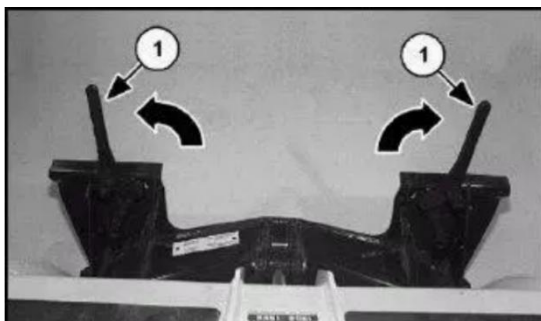
No.	Element	Parameters		Note
	Model	72"		
		British Parameter	Metric Parameter	
1	Total Weight	899lbs	407kg	
2	Working Pressure	3000psi	21Mpa	
3	Overall Width W	86"	2190mm	
4	Height H	34"	870mm	
5	Length L	72"	1830mm	
6	Sweeping Width W1	72"	1830mm	
7	Swing Angle A		$\pm 23^\circ$	
8	Model of Motor		BM3WY-3 15	Rated flow: 75L/min, Speed: 240r/min, Power: 10Kw
9	Brush		$\phi 205\text{mm}^*$ $\phi 660$	38 Concave+2 Flat
10	Hydraulic Cylinder	WCS30-2506		Cylinder diameter: 2.5", Stroke: 6", Rod diameter: 1.25", Single hydraulic cylinder
11	Multi-tandem Valve	Oil Line Selector Valve		Maximum flow: 90L/min, System pressure: 17Mpa, Voltage: DC12V
12	Suitable Loader	Skid Steer Loader		

V. Installation

Please check the quick-change device before installing the V-Snow Blade.

Manual-controlled Quick-change Device

Pull the lever of quick-change device completely open. (as shown below)

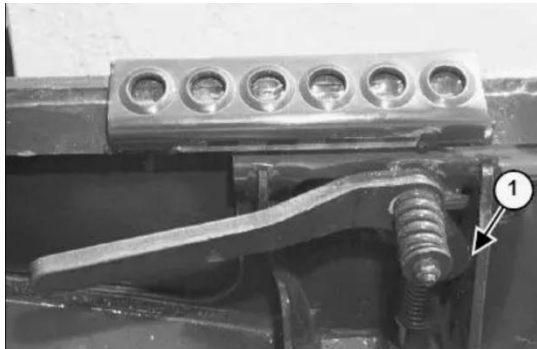


Get into the cab, fasten your seat belt, depress the safety bar, and start the engine. Loosen hand brake.

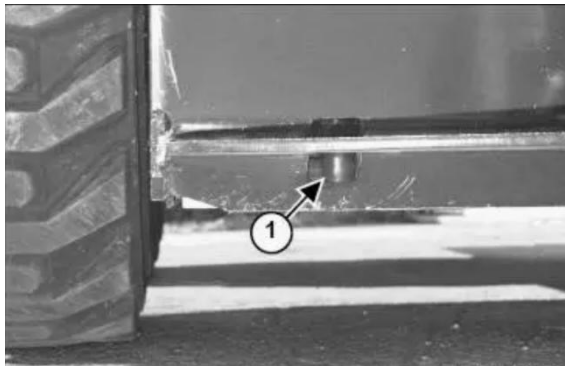
Tilt the quick-changing unit towards the front. Slowly move the machine forward so that the top edge of the quick-change device is fully integrated into the mounting flange of the broom.

Make sure that the pull rod of the quick-change device does not collide with the broom. Retract the quick-change device until the broom is completely off the ground. (as shown below)

Turn off the engine and leave the cab. Depress the pull rod of the quick-change device until the locking pin is fully inserted into the pin hole of the mounting plate and locked. (as shown below)



The lock pin of the quick-change device is completely inserted into the pin hole of the mounting plate and locked, so that the broom and the quick-change device are tightly combined. (as shown below)



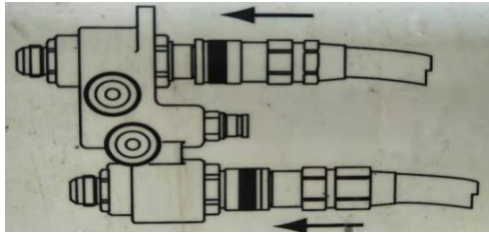
WARNING:

The lock pin of the quick-change device must be inserted into the pin hole of the attachment, and the pull rod must be fully depressed and locked. Otherwise, the broom may fall off the support of the host, resulting in serious injury ,even death.

LAHDHONOR INDUSTRY

Hydraulic connection:

Connect the high pressure hose and oil-return hose to the auxiliary hydraulic plug on the skid steer loader. Push the joint toward the lock position after alignment and insertion. (as shown below)



VI. Operation

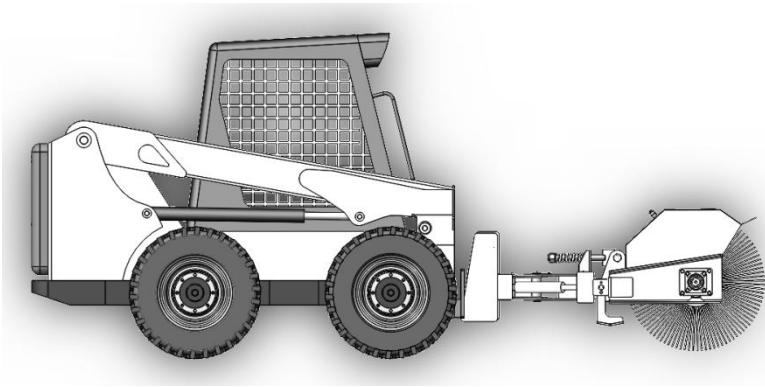
Basic operation:

1. Swing the brush head assembly in the direction where you need to clean.
2. Start the motor of skid steer loader.
3. Adjust the brush head, then lower it to the floor.
4. Increase the speed of the prime mover, so that the brush spindle reaches the desired speed, and start cleaning.
5. Start moving forward at the speed of less than or equal to 8 km/h (5 miles/h).

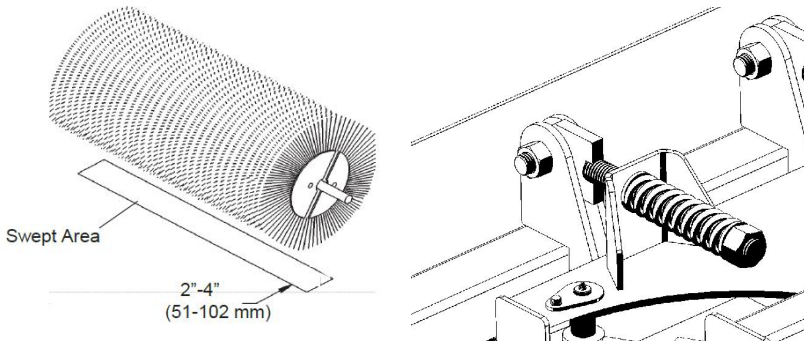
Notes

1. Start the equipment, so that the rolling brush begins to rotate and slowly lower the broom. Make sure the sweeper is adjusted to the swing angle for right and left so that the ground is in contact with the brush surface. Lower the arm of loader and use the float function to keep the broom in a horizontal working position.

The moving direction of the machine should match the rotating direction of the brushes to ensure the cleanliness of sweeping. (as shown below)

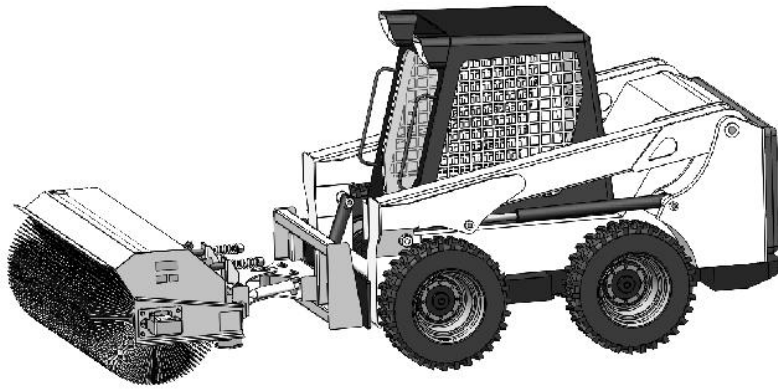


2. In order to reduce the wear of the brush, the pressing action of the broom should be minimized to the great extent. The recommended size of brush in contact with the ground in use is 51-102 mm. (as shown below)



3. In order to make the operation more convenient and reliable, the broom should be lowered as far as possible to prevent accidental actions.

4. After cleaning, lift the broom off the ground to an appropriate height and stop the spindle from rotating. Lifting the broom too high may cause damage to the equipment. (as shown below)



5.The rolling brush shall rotate at low speed and the loader shall move at moderate speed so that gravels on the hard ground can be better removed. Driving too fast can raise dust. This will affect the operator's line of sight and cause harm to the environment.

6.If the snow is thick during clearing process, the speed of spindle should be increased and the driving speed reduced.

7.Start and close the broom at idle speed, so as not to cause damage to the motor of sweeper.

VII. Maintenance

Regular maintenance is the key to extending life span of the equipment and safe operation. Maintenance requirements have been reduced to an absolute minimum. However, it is important that these maintenance functions are performed as described below.

No.	Item	Daily (Per 8 Hours)	Refer to manual for prime power
1	Horizontal brush head assembly	✓	
2	Check the wear degree of brush surface	✓	
3	Check hydraulic system for leakage and tighten if necessary. Inspect for damage and replace as needed.	✓	
4	Grease fittings	✓	
5	Check if the hydraulic system of prime mover reaches the oil level for regular work.	✓	
6	Check whether the hardware is missing or loose. Replace or tighten if necessary.	✓	
7	Check for missing or damaged warning decals and replace them if necessary.	✓	
8	Clean the prime mover air		✓

LAHDHONOR INDUSTRY

	filter.		
--	---------	--	--

Warning: Hydraulic oil/diesel oil spilled under pressure can penetrate the skin and cause serious injury. The liquid spilling from a tiny hole is almost invisible. Use a piece of cardboard or wood instead of your hands to look for a suspected leaking point.

Tel: 1-800-649-8017

Business: sales@usaLAHDHONOR.com

AS service: service@usaLAHDHONOR.com

Website: www.usaLAHDHONOR.com